



Circle of Knowledge Lesson

**SETTING AND THEME
CHAPTERS FOUR TO SIX**

Welcome to Settings Day!



1. Find and sit with your group.
2. Answer the following question in your notebook or on Padlet.
 - How does setting affect the novel's meaning?
 - Why do authors create descriptive settings to relay their message?
3. Take out your settings graphic organizer.

Essential Question (EQ)

How does setting affect the novel's meaning?



Create one sentence, using the word splash, to answer the EQ.

Static Character Plot Setting

Dynamic Character Internal Conflict

Theme Description

Details Point of view

Author's message External Conflict

Setting Small Group Discussion (10-15_{min})



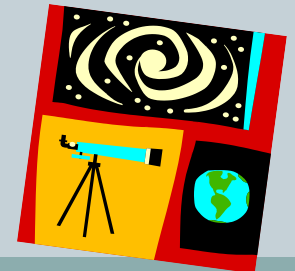
As a small group, discuss your thoughts about the following questions. *Be sure to record notes from your discussion in your settings graphic organizer!*

- Why does setting support the author's main message?
- With each of the planets described, the novel gives us a glimpse into a universe of beauty and horror. Why do you think L'Engle includes contrasting settings?
- After reading about these various settings, what do you think exists outside our universe?

Planet Poster on PicCollage



- Create your own poster representing your planet.
- Go to PicCollage and format your poster. You must include the following **four sections**:
 - ✦ Planet features,
 - ✦ How the planet connects to the theme of good vs. evil,
 - ✦ Character reactions, and
 - ✦ Any information learned from the characters' adventures on the planet.
- Use text and pictures to describe each section.
- Be sure to include the planet's name.
- When you have finished, upload your poster to the appropriate Padlet Wall.



Ticket Out the Door



What one thing are you looking forward to learning about from the other planets? (interpretations, character reactions, theme relationships)

Finalize PicCollage and Gallery Walk



1. If you have not already, complete your PicCollage and upload it to the appropriate Padlet Wall.
2. Keep your planet's Padlet wall open.
3. Take a gallery walk note taking sheet.
4. Complete a gallery walk of "Planets and PicCollages."