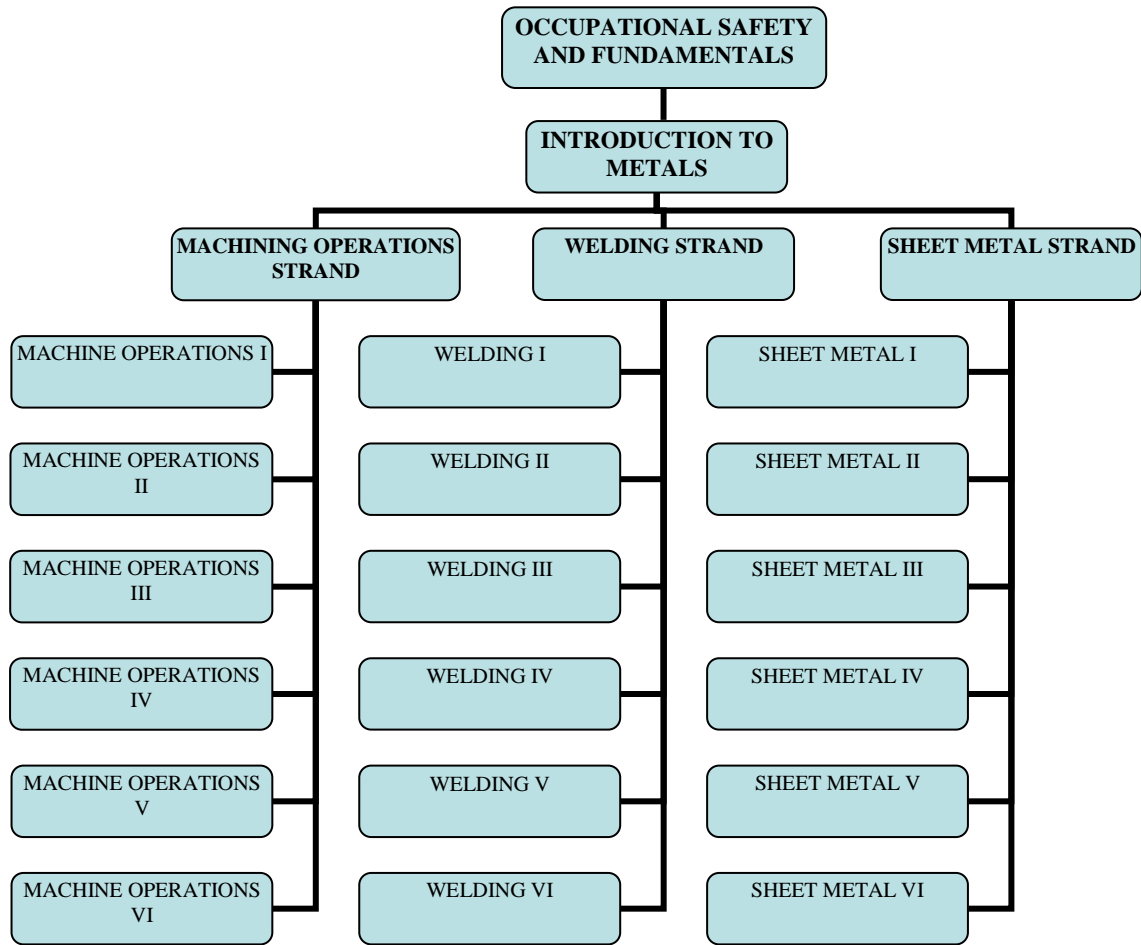


Implementation date
 Fall 2010

METALS TECHNOLOGY PATHWAY MAP



This Metals Technology Pathway is designed to prepare a student with foundational knowledge and skills for a career in one of three possible crafts. As the student progresses through the Pathway they are given the opportunity to explore three craft areas on an introductory level. Once they have completed the foundational and introductory levels they are then given the option to “major” in at least one of three craft areas. These areas are Machining Operations, Welding, or Sheet Metal. Successful completion of this Pathway includes four units consisting of Occupational Safety and Fundamentals; Introduction to Metals; and Levels I and II within one craft area.